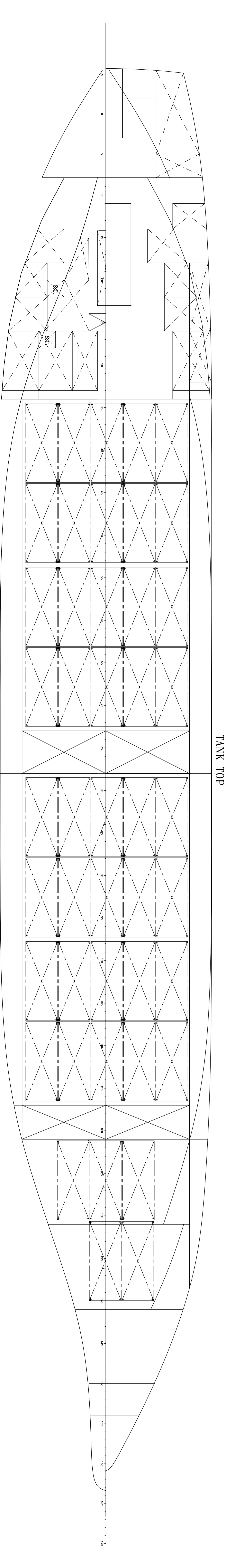
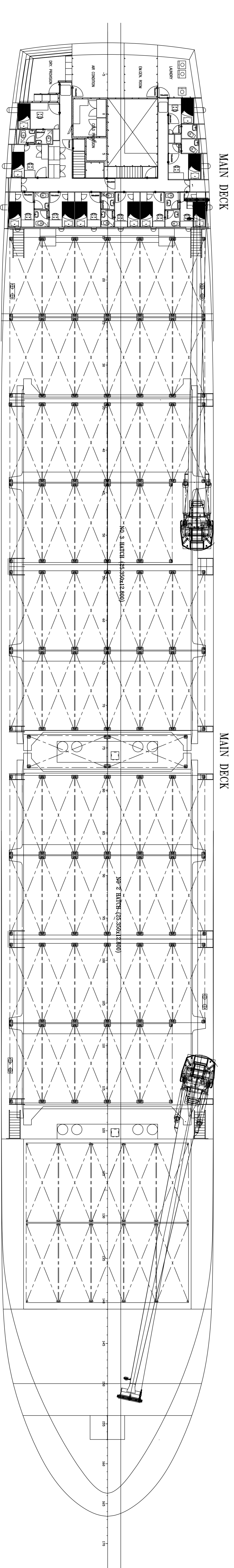
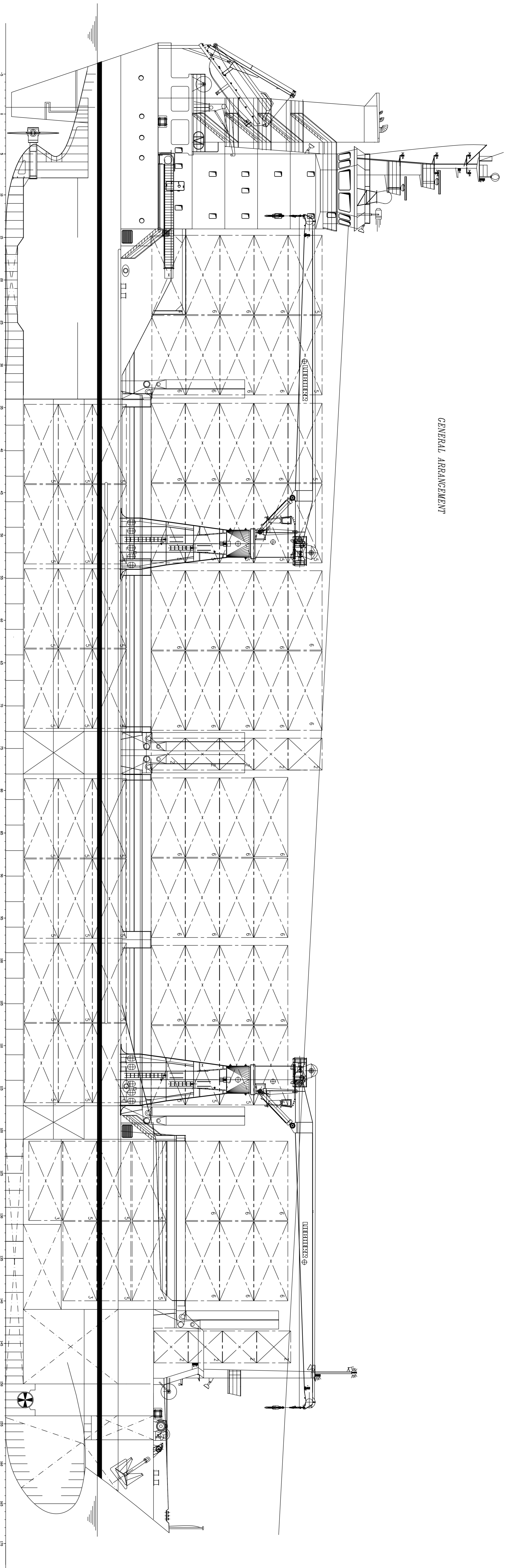


GENERAL ARRANGEMENT



PRINCIPAL DIMENSIONS

LENGTH O.A.	113.80 M
LENGTH B.P.	104.50 M
BREADTH M.I.D.	16.20 M
DEPTH	8.80 M
DRAFT (Design)	7.00 M

CAPACITY : 280 000 DWT
 CONTAINERS IN HOLD : 512 TEU'S
 CONTAINERS ON DECK : 512 TEU'S
 CONTAINERS (4 T BAKERS) : 300 TEU'S

SHIP IS EQUIPPED FOR CONTAINER CARGO IN HOLD AND ON DECK.

- HYPERBOLIC HATCH COVERS TO HAVE A STRENGTH OF 1.75 TONS OF 500/500 FT CONTAINERS AT TOTAL STACK WEIGHT OF 30/50 TONS
- INNER BOTTOM PLATING AND STIFFENERS TO HAVE A STRENGTH OF 1.5 TONS/4' SQUARE FOOT
- 3 TIERS OF 500 20'x40' FT CONTAINERS AT TOTAL STACK HEIGHT OF 60/90 TONS

NO.	REVISION	DATE
1		
2		
3		
4		

THE SCALE AND THE CONSTRUCTION ARE SUBJECTS OF THE LOCAL REGULATIONS / CODES / ETC.
 THE DESIGNING & SUPERVISION COMPANY SHALL NOT BE RESPONSIBLE IN CASE OF A M.P.A. OR
 ANY OTHER AUTHORITY'S REJECTION OF THE DESIGN OR CONSTRUCTION OF THE SHIP.
 © 2017 BY ADVARIN MARINE ENGINEERING & DESIGN CONSULTANTS, INC. ALL RIGHTS RESERVED.

ADVARIN
 DESIGNERS
 CONTAINER SHIP
 GENERAL ARRANGEMENT

SHIPYARD	OSAN A.S.	HULL NO	22	CLASS	A.B.S.
DESIGNED BY	Q. ALIAN DEMIRBAYRAK	CONTROL	Q. ALIAN DEMIRBAYRAK	SCALE	1/100
OWNER	BARAKTAR DEN. VE TIC. A.S.	DRWN	BRWN	SPCS	6-R-01